

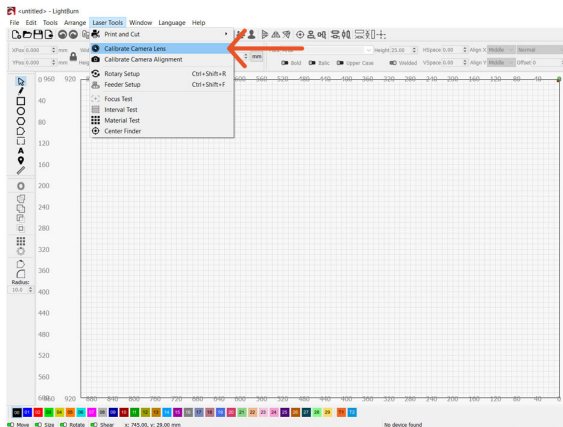
# Setting Up the LightBurn Camera

## What You'll Need:

- ☐ Computer with LightBurn
- ☐ Machine with LightBurn Camera
- ☐ 1/8"-1/4" Wood Board
- ☐ USB Cable

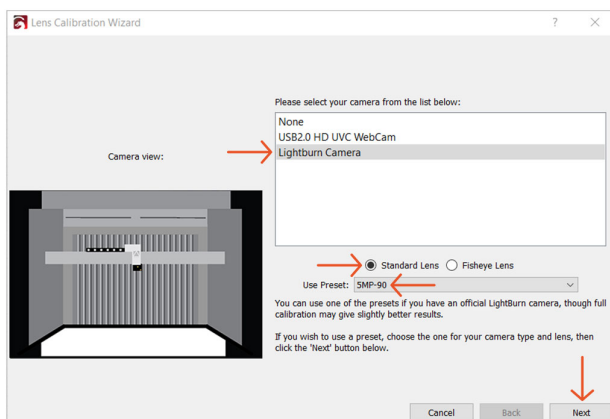
### 1 In LightBurn:

- ▶ Click on the **Laser Tools** dropdown window.
- ▶ Select **Calibrate Camera Lens**.

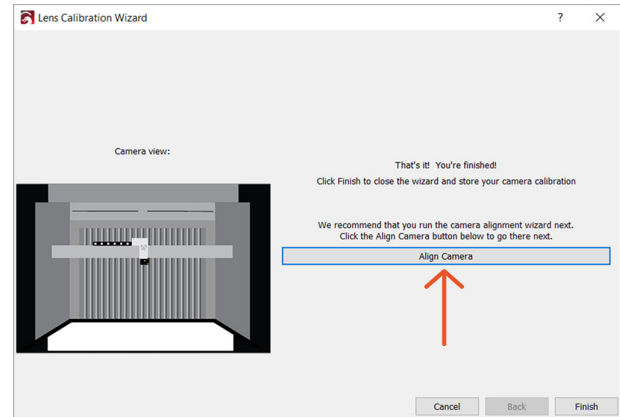


### 2 In the Lens Calibration Wizard window:

- ▶ Select **LightBurn Camera** from the list.
- ▶ Click the **Standard Lens** selection below the camera list.
- ▶ From the **User Preset** dropdown, select the **5megapixel 90** option.
- ▶ Click **Next**.

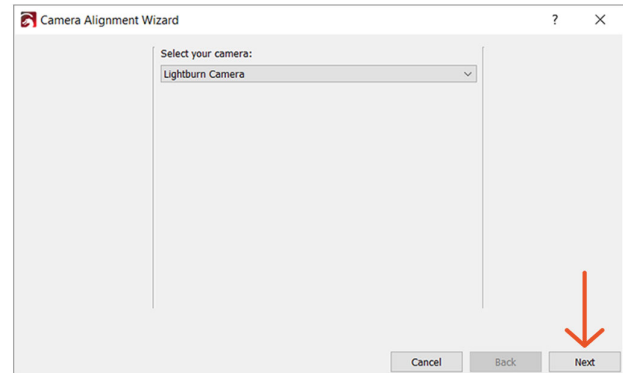


### 3 In the Lens Calibration Wizard window click **Align Camera**.

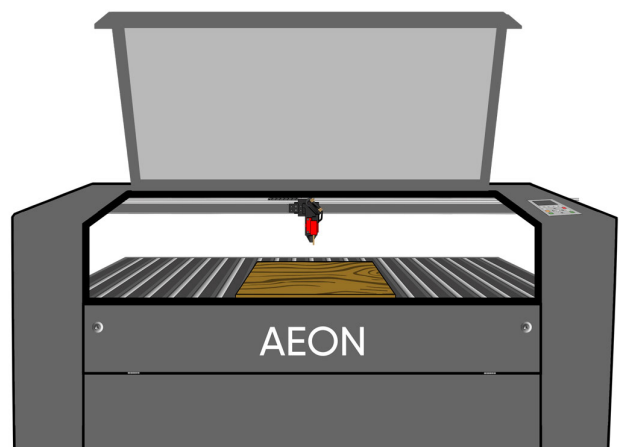


### 4 In the Camera Alignment Wizard window:

- ▶ Select **LightBurn Camera**.
- ▶ Click **Next**.

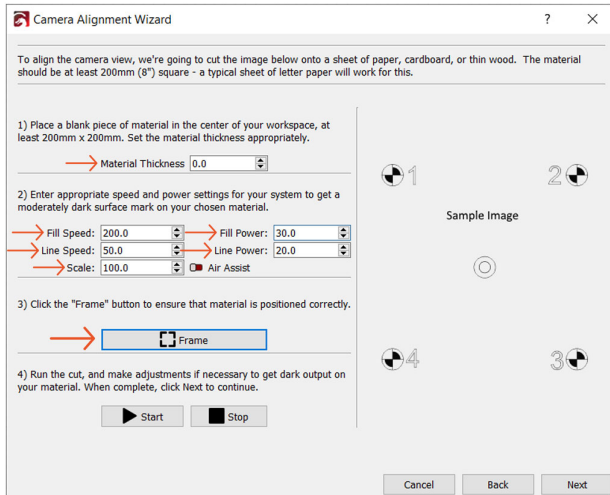


### 5 Lay a 1/8"-1/4" thick board, that is a minimum of 12"x12", in the center of the laser bed.



### 6 In the Camera Alignment Wizard window enter:

- ▶ Material Thickness: 0
- ▶ Fill Speed: 200
- ▶ Line Speed: 50
- ▶ Fill Power: 30
- ▶ Line Power: 20
- ▶ Scale: 100

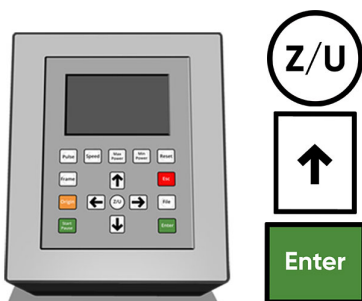


7 Once the settings are entered, click **Frame**.

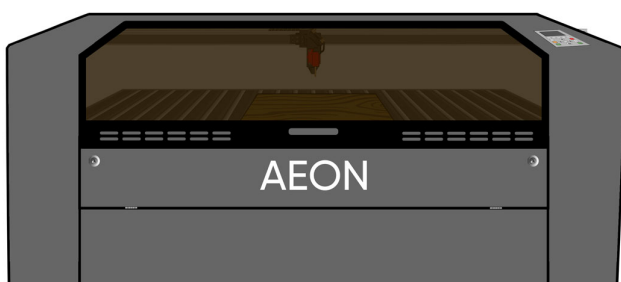
8 Watch the red dot on the laser head as it frames the square, adjust as needed.



9 On the machine keypad, press the **Z/U** button, press the **UP** button 6 times, and then press **ENTER** to focus the laser head.



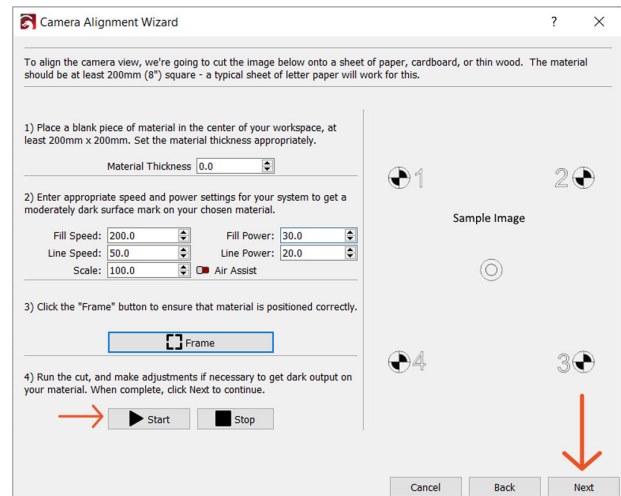
10 Close the lid.



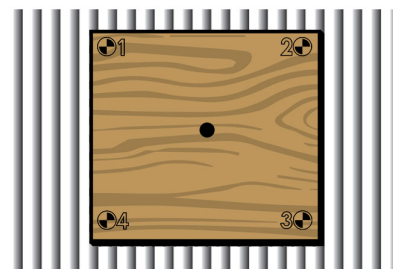
11 In the **Camera Alignment Wizard** window, click **Start**.

## Caution:

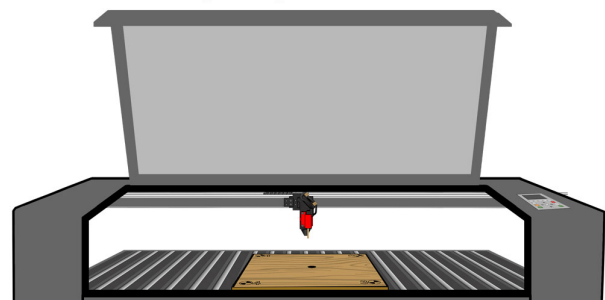
Before clicking **Start**, ALWAYS ensure that onlookers are clear from the machine and are wearing their laser safety glasses.



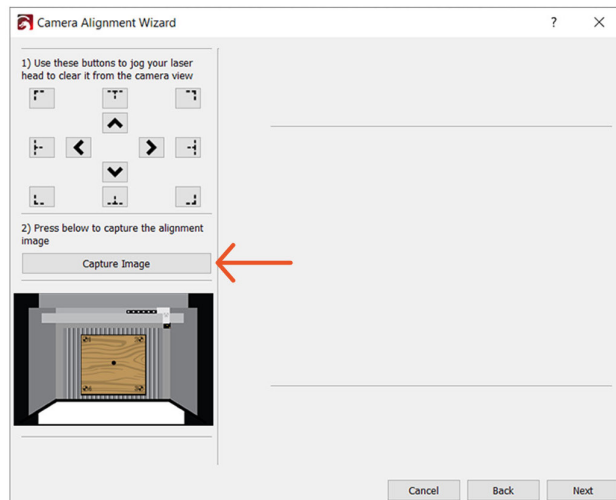
12 Once the laser has burned the sample image into the material, click **Next** in the **Camera Alignment Wizard** window.



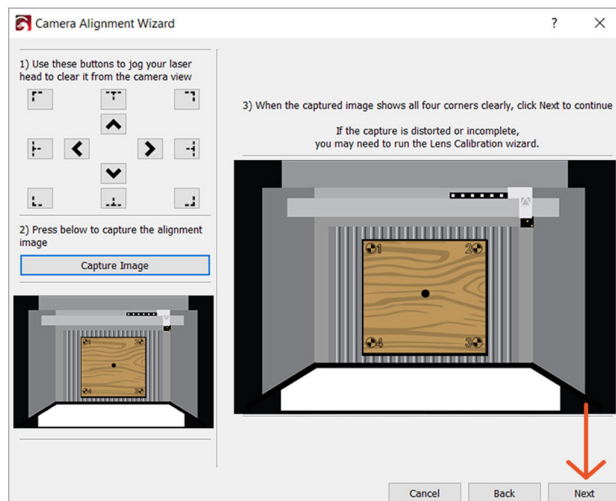
13 Lift the lid of the machine. Once the lid is open, gently press up on the lid, and allow it to settle back into the open position.



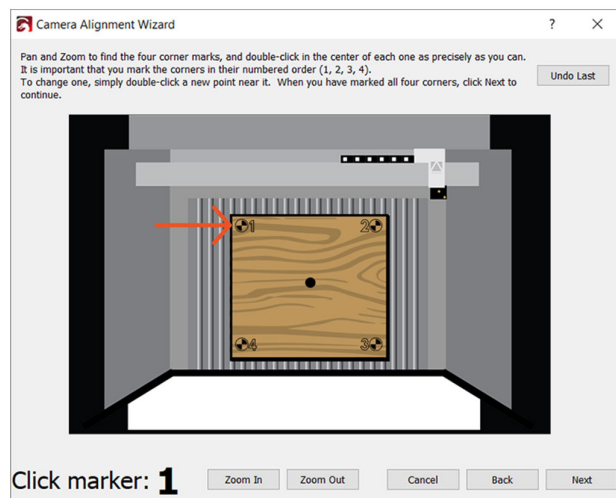
**14** In the **Camera Alignment Wizard** window click **Capture Image**.



**15** Once the image of the laser bed is captured in the **Camera Alignment Wizard** window click **Next**.



**16** In the **Camera Alignment Wizard** window zoom in on **Marker 1**.



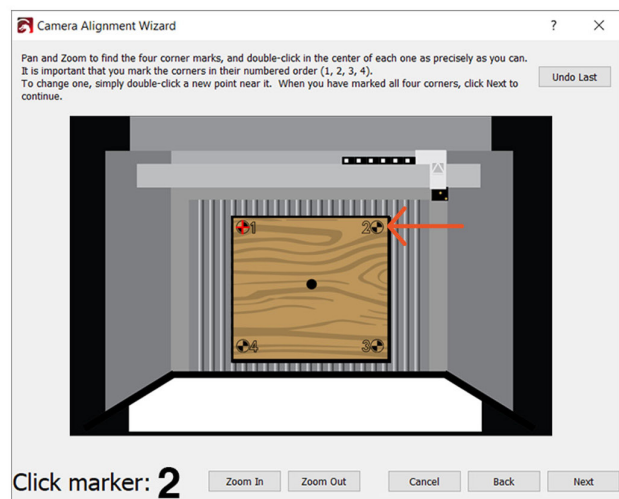
**17** Double click on the center of the **Marker 1** target.



## Note:

If you do not click on the exact center of the marker target, click **Undo Last** in the upper right corner of the **Camera Alignment Wizard** window. You can now double click on the center of the marker again.

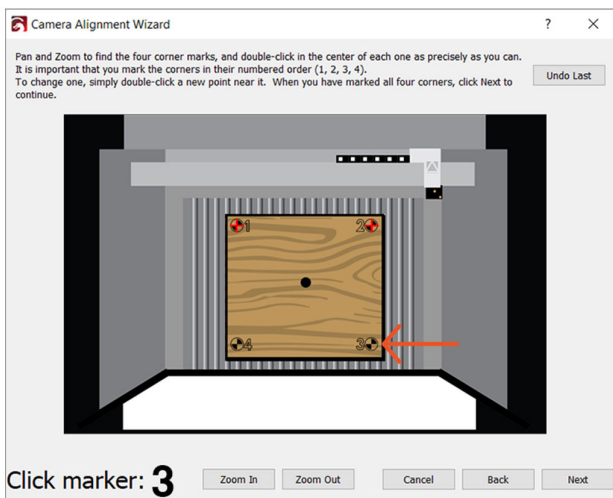
**18** Zoom out from **Marker 1**, and locate **Marker 2**.



**19** Zoom in on **Marker 2**, and double click on the center of the target.



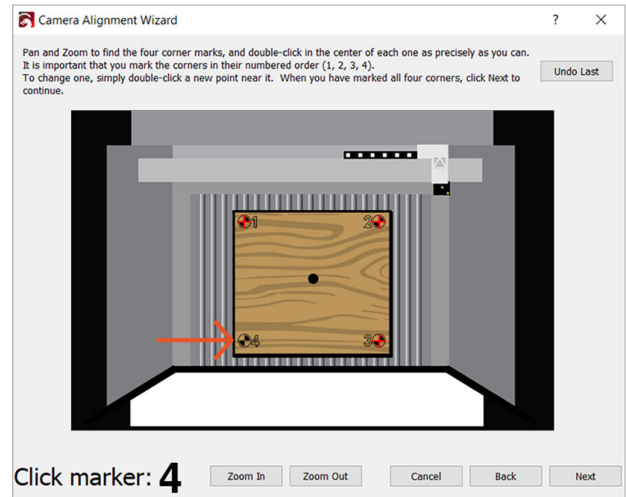
**20** Zoom out from **Marker 2**, and locate **Marker 3**.



**21** Zoom in on **Marker 3**, and double click on the center of the target.



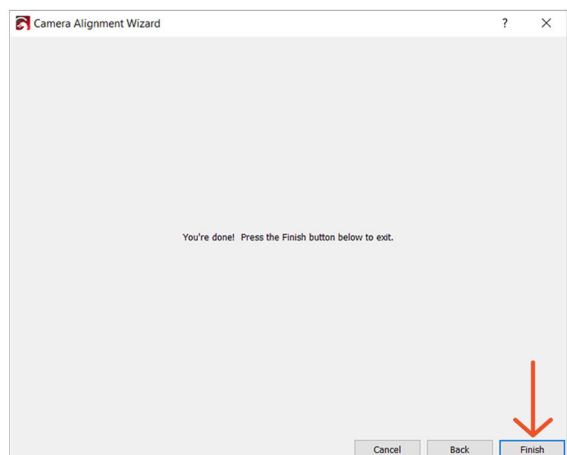
**22** Zoom out from **Marker 3**, and locate **Marker 4**.



**23** Zoom in on **Marker 4**, and double click on the center of the target.



**24** Once you have clicked on the centers of all four Markers, click **Next**.



**25** In the **Camera Alignment Wizard** window click **Finish**.